



Bluetooth 2D Pocket barcode scanner

Quick Guide



Model no.: iDC9608K

Introduction

Designed primarily for P.O.S. retail environments, the iDC9608K is a Bluetooth pocket barcode scanner that allows you to scan various barcoded items. Its in-built excellent 2D engine allows you to reliably read 1D / 2D barcodes on various shapes and is a great space-saver for busy or limited workspaces. It supports iOS, Android, and Windows devices through Bluetooth HID or SPP communication.

Delivery content

- * Pocket Barcode scanner x 1
- * Mini USB cable x 1 (for charging only)
- * Quick instructions x 1
- * Strap x 1

Limited Warranty

We provide one-year limited warranty. We will not warranty any product which has been subjected to improper usage, neglect or unauthorized repair or installation. Besides, warranty does not cover the faulty usages or consumable parts. (Cable & battery are consumable.)

Safety instructions

Read the operating instructions carefully and especially observe the safety information. If you do not follow the safety instructions and information on proper handling in this manual, we assume no liability for any resulting personal injury or damage to property.

- * Don't put scanner in places excessively high temperatures, such as expose under direct sunlight
- * Don't use scanner in extremely humid area or drastic temperature change
- * The rechargeable battery is permanently built into the product and cannot be replaced.
- * Never damage the rechargeable battery. Damaging the casing of the rechargeable battery might cause an explosion or a fire!

Operating elements

** Please switch ON and charge scanner for 3~4 hours at first time before use.



- * **In the beginning, you must press the orange trigger button for 8 seconds to turn on the pocket barcode scanner. Then, press it for scanning barcodes & waking up from sleeping mode.**
- * **If you won't use pocket scanner for quite a long time, you can press 2 grey buttons to enter "Deep Sleep Mode" (like turn-off).**

How to Connect to Smartphone or Tablet

1. Make sure your device supports BT HID or BT SPP profile
 2. Turn off Power-Saving mode on your smartphone/tablet first
 3. Then, choose HID or SPP device before connecting to smartphone/tablet.
- If you don't know what profile your device is, please try HID profile first, then, SPP profile.

1. Main MENU

```
MAIN> S 12:52
Direct-scan
Memory-scan
Upload
↑ ENTER ↓
```

2. select Setup

```
MAIN> S 12:52
Memory-scan
Upload
Setup
↑ ENTER ↓
```

3. select BT setup

```
S> S 12:52
BT setup
Sleep time
Output Speed
ESC ENTER ↓
```

After you select what you want, press the orange button to enter the next or ESC button back to the previous.

How to connect to SPP or HID device

SPP device (from A1 to A2); HID device (from B1 to B3)

A1. select SPP device

```
S/B> S 12:52
HID device
SPP device
dongle
ESC ENTER ↓
```

A2. select Simple pairing or Pairing

```
S/B/S> S 12:52
Simple pairing
Pairing
ESC ENTER ↓
```

A3. Setting ... Completed.

```
Setting ...
Completed!!!
```

B1. select HID device

```
S/B> S 12:52
HID device
SPP device
dongle
ESC ENTER ↓
```

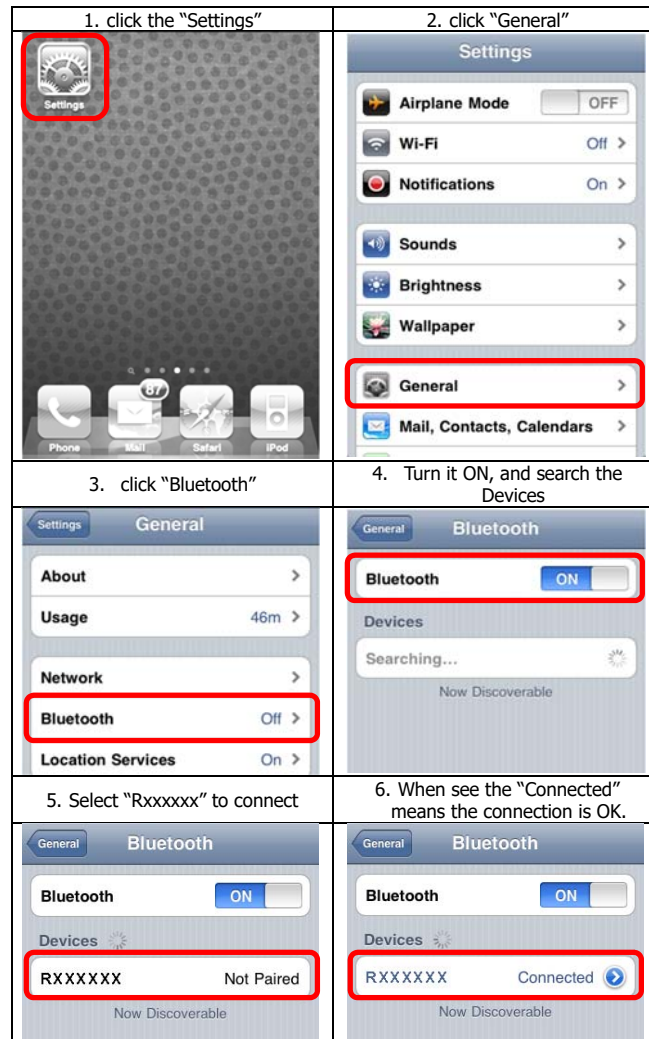
B2. select Simple pairing or Pairing

```
S/B/H> S 12:52
Simple pairing
Pairing
ESC ENTER ↓
```

B3. Setting ... Completed.

```
Setting ...
Completed!!!
```

After you select what you want, press the orange button to enter the next or ESC button back to the previous.



(example: pairing with iPhone)

4. Please complete the connection procedures as the above photos.
5. After the connection is completed, the RED light will be **OFF**.
6. Please open WordPad or appropriate APP first, then, scan the barcodes and the barcode data will show on the cursor side.

Notes:

- * This product complies with Bluetooth standards. This device that communicated with this product must support the same SPP or HID. For other Bluetooth devices with other profiles we cannot guarantee a connection before the product has been tested.
- * The communication speed and range of the product may vary due to obstacles and radio wave condition between the product and device to which it is connected. Condition on the host device may also affect the communication speed and range of the scanner.

LED Indicator Information

Orange LED ON	Full charged
Orange LED Flashing	Charging / Low battery
Red LED ON	Offline / out of service
Green LED ON	Good read
Orange LED ON	Good read (Batch mode)

Remark:

- * When the battery power is too low, the Orange LED will flash and beep once. Scanner should be charged immediately.
- * In case the power consumed out totally; the RTC (Real Time Clock) will back to original setting 01012000.
- * If scanner shuts down it is recommended to charge it fully before turning it back on.
- * Under power-saving mode, there will not be LED indication when charging.

Reset Configuration to Defaults

(scan from A1 to A2 for HID profile or B1 to B2 for SPP profile)

HID profile



A1

SPP profile



B1



A2



B2

There are two operating modes on the scanner

1. Direct-scan Mode

1. select **Direct-scan**

```
MAIN> H 12:52
Direct-scan
Memory-scan
Upload
↑ ENTER ↓
```

- 2b. BT is disconnected.

```
D> H 12:52
Off line !!!
...Linking!
ESC
```

- 2a. BT connected, begin to scan the barcodes

```
D> H 12:52
ESC SCAN
```

If BT is disconnected, please back to page #2 and do the pairing procedure again.

2. Memory-scan Mode

1. select **Memory-scan**

```
MAIN> H 12:52
Direct-scan
Memory-scan
Upload
↑ ENTER ↓
```

2. begin to scan the barcodes

```
M> H 12:52
ESC SCAN
```

Under Memory-scan mode, enable/disable "Quantity entry" function

Disable "Quantity entry" (default)

1. disable "Quantity entry" Setting code



3. press **DEL** to delete the last barcode data

```
M> H 12:52
1234567
ESC SCAN DEL
```

2. begin to scan the barcodes

```
M> H 12:52
ESC SCAN
```

4. be sure that you want to delete the last barcode.

```
M> H 12:52
The last code
Will be deleted !
Are you sure ?
NO YES
```

Enable "Quantity Entry" function,

decide the order of the output data to your device first

1. Q'ty first, then, barcode



3. Enable "Quantity Entry" Setting code



2. Barcode first, then, Q'ty



4. begin to scan the barcodes

```
M> H 12:52
Scan code:
Q'ty:
ESC SCAN
```

When "Quantity Entry" is enabled, decide how to type-in the number.

- By button (default) C1. enable



- C2. scan the barcode

```
M> H 12:52
1234567
Q'ty: 1
ESC SCAN ENTER
```

- C3. Press the ENTER to type the q'ty

```
M> H 12:52
1234567
Q'ty: 1
ESC SCAN ENTER
```

- C4. press ↓ to choose number, then, press ENTER to confirm

```
M> H 12:52
1234567
Q'ty: 5---
ESC ENTER ↓
```

5. Then, scan the next barcode

```
M> H 12:52
SCAN:
Q'ty:
ESC SCAN
```

- By scanning the number code D1. enable



- D2. scan the barcodes

```
M> H 12:52
7654321
Q'ty: 1
ESC SCAN ENTER
```

- D3. Press the ENTER to type the q'ty

```
M> H 12:52
7654321
Q'ty: 1
ESC SCAN ENTER
```

- D4. scan numeric code (page #5)

```
M> H 12:52
7654321
Q'ty: 5---
ESC SCAN
```

5. end by X code, then, be ready to scan the next

```
M> H 12:52
SCAN:
Q'ty:
ESC SCAN
```

Upload data (Memory-scan)

1. press **ESC**, select **Upload**

```
MAIN> H 12:52
Direct-scan
Memory-scan
Upload
↑ ENTER ↓
```

3. After data upload, press **ERASE** to delete memory data

```
U> H 12:52
ESC SPEED ERASE
```

2. BT connected, press **START** to send data

```
U> H 12:52
Push START key
to send data...
ESC START
```

4. be sure that you want to delete memory data.

```
U/E> H 12:52
Data in memory
Will be erased!
Are you sure?
NO YES
```

5. After you delete the memory data, it will be back to **MAIN MENU**

Switch from Memory-scan to Direct-scan mode

1. switch **Memory-scan** to **Direct-scan** mode

```
D> H 12:52
Data in memory
will be erased!
Are you sure?
NO YES
```

3. begin to scan the barcode

```
D> H 12:52
ESC SCAN
```

2. must **delete** all data in the memory

Completed!!!

Power-saving Mode

1. Main MENU

```
MAIN> H 12:52
Direct-scan
Memory-scan
Upload
Setup
↑ ENTER ↓
```

3. select **Sleep time**

```
S> H 12:52
BT setup
Sleep time
Output Speed
ESC ENTER ↓
```

2. select **Setup**

```
MAIN> H 12:52
Memory-scan
Upload
Setup
↑ ENTER ↓
```

4. press ↓, decide the time to enter sleeping mode

```
S/P/S> H 12:52
Sleep time
00
ESC ENTER ↓
```

* When charging, the scanner will not enter power-saving mode automatically.

Transmission Speed

Transmission speed is dependent on your device. In order not to lose data, please choose the correct speed.

1. Main MENU

```
MAIN> H 12:52
Direct-scan
Memory-scan
Upload
↑ ENTER ↓
```

3. select Output Speed

```
S> H 12:52
BT Status
Sleep time
Output Speed
ESC ENTER ↓
```

2. select Setup

```
MAIN> H 12:52
Memory-scan
Upload
Setup
↑ ENTER ↓
```

4. select the speed type,

```
S/O> H 12:52
Unlimited
Extra high
High
ESC ENTER ↓
```

RTC (Real-time clock)

1. Main MENU

```
MAIN> H 12:52
Direct-scan
Memory-scan
Upload
↑ ENTER ↓
```

3. select Time setup

```
S> H 12:52
Sleep time
Output Speed
Time setup
ESC ENTER ↓
```

5. select Date Stamp

```
S/T/S> H 12:52
Date Stamp
Time Stamp
Interval char.
ESC ENTER ↓
```

7. press ESC, select Time Stamp

```
S/T/S> H 12:52
Date Stamp
Time Stamp
Interval char.
ESC ENTER ↓
```

9. press ESC, select Interval char.

```
S/T/S> H 12:52
Date Stamp
Time Stamp
Interval char.
ESC ENTER ↓
```

2. select Setup

```
MAIN> H 12:52
Memory-scan
Upload
Setup
↑ ENTER ↓
```

4. select Stamp

```
S/T> H 12:52
Stamp
Format
Date adj.
ESC ENTER ↓
```

6. Date Stamp is on or off.

```
S/T/S/D> H 12:52
Date Stamp
On
Off
ESC ENTER ↓
```

8. Time Stamp is on or off

```
S/T/S/T> H 12:52
Time Stamp
On
Off
ESC ENTER ↓
```

8. select Interval char.

```
S/T/S/P H 12:52
>
Interval char.
'
ESC ENTER ↓
```

The format of Date setting

1. Main MENU

```
MAIN> H 12:52
Direct-scan
Memory-scan
Upload
↑ ENTER ↓
```

3. select Time setup

```
S> H 12:52
Sleep time
Output Speed
Time setup
ESC ENTER ↓
```

5. select the format of date

```
S/T/F> H 12:52
MM/DD/YY
DD/MM/YY
YY/MM/DD
ESC ENTER ↓
```

2. select Setup

```
MAIN> H 12:52
Memory-scan
Upload
Setup
↑ ENTER ↓
```

4. select Format

```
S/T> H 12:52
Stamp
Format
Date adj.
ESC ENTER ↓
```

Date setting

1. Main MENU

```
MAIN> H 12:52
Direct-scan
Memory-scan
Upload
↑ ENTER ↓
```

3. select Time setup

```
S> H 12:52
Sleep time
Output Speed
Time setup
ESC ENTER ↓
```

5. Set the date, press ↓ to select number, then, press ENTER to go to the next

```
S/T/D> H 12:52
Year (00-99) : 11
Month (01-12) : 12
Date (01-XX) : 02
ESC ENTER ↓
```

2. select Setup

```
MAIN> H 12:52
Memory-scan
Upload
Setup
↑ ENTER ↓
```

4. select Date adj.

```
S/T> H 12:52
Stamp
Format
Date adj.
ESC ENTER ↓
```

6. Save the date data

```
Save it ?
NO YES
```

Time setting

1. Main MENU

```
MAIN> H 12:52
Direct-scan
Memory-scan
Upload
↑ ENTER ↓
```

3. select Time setup

```
S> H 12:52
Sleep time
Output Speed
Time setup
ESC ENTER ↓
```

5. set the time. Press ↓ to select the number, then, press the ENTER to go the next

```
S/T/T> H 12:52
Hour (00-23) : 00
Min (00-59) : 00
Sec (00-59) : 00
ESC ENTER ↓
```

2. select Setup

```
MAIN> H 12:52
Memory-scan
Upload
Setup
↑ ENTER ↓
```

4. select Clock adj.

```
S/T> H 12:52
Format
Date adj.
Clock adj.
ESC ENTER ↓
```

6. save the time setting

```
Save it ?
NO YES
```

Multi-language UI setting

(can be changed to different UI by reading the below setting code)



Germany UI



Japan UI



English UI (Default)



Spain UI



French UI

How to append a "prefix" or a "suffix" to the barcode data



prefix



suffix

1. Scan above configuration code for Prefix or Suffix
2. Enter the required values (right, numeric barcode) for Prefix or Suffix using the hex values for the desired HEX values from Prefix & Suffix TABLE (below page)"
3. Then, end by scanning Code X (below, right)

- * The max. of special characters is 5.
- * When you append 1~4 required values for Prefix or Suffix, it must end with Code X.
- * It doesn't need Code X, if you append 5 values to barcode data.

How to delete Prefix or Suffix

1. Scan above configuration code for Prefix or Suffix
2. Enter the "0" "0" (above, right)
3. Then end by scanning Code X (below, right)

Numeric barcode for settings



0



6



C



1



7



D



2



8



E



3



9



F



4



A



X



5



B



X

Prefix & Suffix TABLE

HEX	HID (SPP)	HEX	HID (SPP)	HEX		HEX		HEX		HEX	
01	CTRL A (SOH)	19	CTRL Y (EM)	20	SPACE	38	8	50	P	68	h
02	CTRL B (STX)	1A	CTRL Z (SUB)	21	!	39	9	51	Q	69	i
03	CTRL C (ETX)	1B	ESC (ESC)	22	"	3A	:	52	R	6A	j
04	CTRL D (EOT)	1C	CTRL \ (FS)	23	#	3B	;	53	S	6B	k
05	CTRL E (ENQ)	1D	CTRL] (GS)	24	\$	3C	<	54	T	6C	l
06	CTRL F (ACK)	1E	CTRL ^ (RS)	25	%	3D	=	55	U	6D	m
07	CTRL G (BEL)	1F	CTRL _ (US)	26	&	3E	>	56	V	6E	n
08	Backspace (BS)			27	'	3F	?	57	W	6F	o
09	Tab (HT)	HEX	HID Only	28	(40	@	58	X	70	p
0A	CTRL J (LF)	80	F1	29)	41	A	59	Y	71	q
0B	CTRL K (VT)	81	F2	2A	*	42	B	5A	Z	72	r
0C	CTRL L (FF)	82	F3	2B	+	43	C	5B	[73	s
0D	Enter (CR)	83	F4	2C	,	44	D	5C	\	74	t
0E	CTRL N (SO)	84	F5	2D	-	45	E	5D]	75	u
0F	CTRL O (SI)	85	F6	2E	.	46	F	5E	^	76	v
10	CTRL P (DLE)	86	F7	2F	/	47	G	5F	_	77	w
11	CTRL Q (DC1)	87	F8	30	0	48	H	60	`	78	x
12	CTRL R (DC2)	88	F9	31	1	49	I	61	a	79	y
13	CTRL S (DC3)	89	F10	32	2	4A	J	62	b	7A	z
14	CTRL T (DC4)	8A	F11	33	3	4B	K	63	c	7B	{
15	CTRL U (NAK)	8B	F12	34	4	4C	L	64	d	7C	
16	CTRL V (SYN)			35	5	4D	M	65	e	7D	}
17	CTRL W (ETB)			36	6	4E	N	66	f	7E	~
18	CTRL X (CAN)			37	7	4F	O	67	g		

Keyboard Country



Scan the appropriate country code below to program the keyboard for your country or language. As a general rule, the following characters are not supported by the scanner for countries other than the United States:
@ | \$ # { } [] = / ' \ < > ~

Follow the steps mentioned below to program.

1. Keyboard Country setting code.
2. "Select Country Code"

Read numeric barcode (according to country code table).

Country/ Language	No.	Country/ Language	No.	Country/ Language	No.
U.S.	10	Netherlands	26	Switzerland French	45
Latin America	11	Hungary	27	Switzerland German	46
Brazil	12	Italian	28	Sweden	47
Belgium	20	Icelandic	29	Turkey F	48
Bulgarian Latin	21	Norway	30	Turkey Q	49
Denmark	22	Poland	41	Japan	71
Finland	23	Portugal	42	Korea	72
France	24	Russia	43	Thai	73
Germany	25	Spain	44	Vietnam	74

Soft-Keyboard setting code for Android / iOS



For Android



For iOS

* Under Android system:

If you want to raise/lower On-Screen keyboard, please read the above setting code first. Then, press left button for 2 seconds to activate this function (LED is RED /Bluetooth is offline), press it again to lower keyboard (LED is off/ Bluetooth is online).

***It will take 5~10 seconds to make BT online/offline.**

***Please be noted that when BT is offline, scanning function is stopped.**

* Under iOS system:

If you want to raise/lower On-screen keyboard, please read the above setting code first. Then, press left button for 2 seconds to raise/lower soft-KeyBoard;

Trigger Mode



Trigger always
(Trigger available at any time)



Trigger standard **(Default)**
(Trigger available, after data sent to the device)

1D Symbolologies -1

ENABLE



UPC-A/E

DISABLE



ENABLE



JAN/EAN

DISABLE



ENABLE



Code 39

DISABLE



ENABLE



Tri-optic

DISABLE



ENABLE



CODE 93

DISABLE



ENABLE



CODE 11

DISABLE



1D Symbolologies -2

ENABLE



Interleaved
25

DISABLE



ENABLE



Industrial 25

DISABLE



ENABLE



Matrix 25

DISABLE



ENABLE



Chinese Post
Matrix 25

DISABLE



ENABLE



MSI/Plessey

DISABLE



ENABLE



UK/Plessey

DISABLE



1D Symbolologies -3

ENABLE



GS1 DataBar

DISABLE



ENABLE



GS1 DataBar Limited

DISABLE



ENABLE



GS1 DataBar Expanded

DISABLE



ENABLE



CODABAR

DISABLE



ENABLE



Telepen

DISABLE



2D Symbolologies

ENABLE



PDF 417

DISABLE



ENABLE



Micro PDF 417

DISABLE



ENABLE



Data Matrix

DISABLE



ENABLE



Maxi code

DISABLE



ENABLE



Micro QR CODE

DISABLE

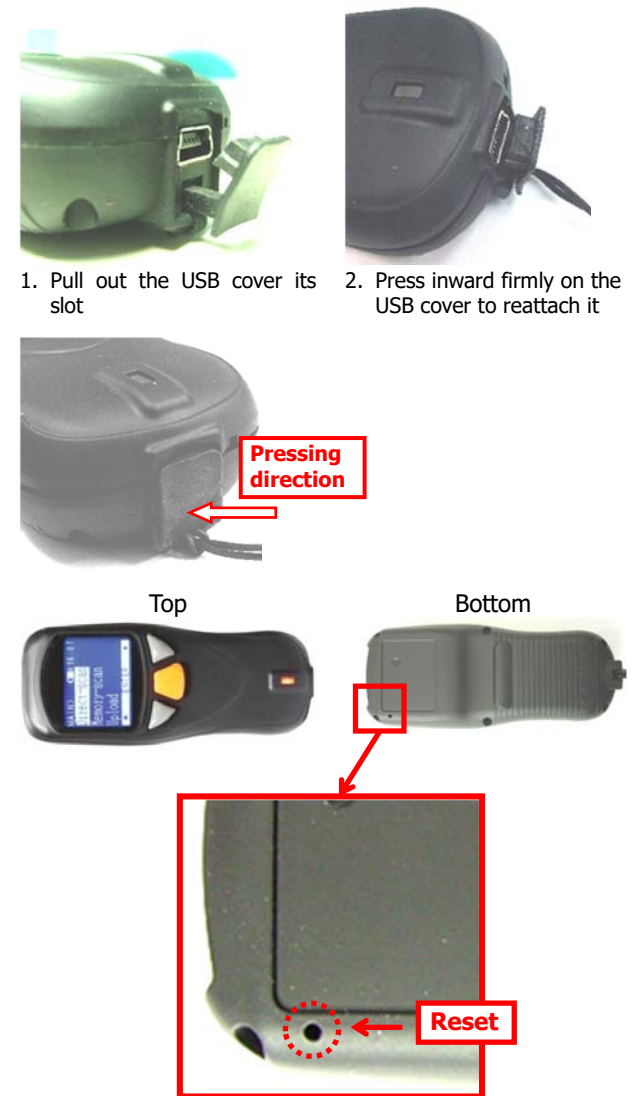


ENABLE



Aztec

DISABLE



Insert a thin object (e.g. a bent paper clip) into the small hole.
To click the reset button inside

Hardware reset button = re-start button.

If scanner is freezing because of unknown issue, you can press this reset button to re-start it.

Quick guide is subject to change without notice.

R_191219_01