

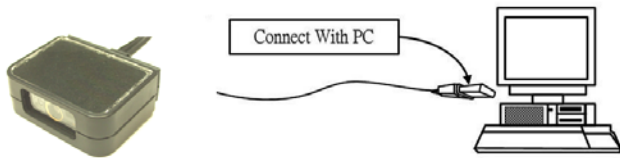
# Programming Quick Guide

## - FS5107A

### Installation

Make sure that the scanner has the correct cable to plug in the PC as below described:

**\*Note :** Please install PL-2303 driver for USB serial



### Reset Configuration to Defaults

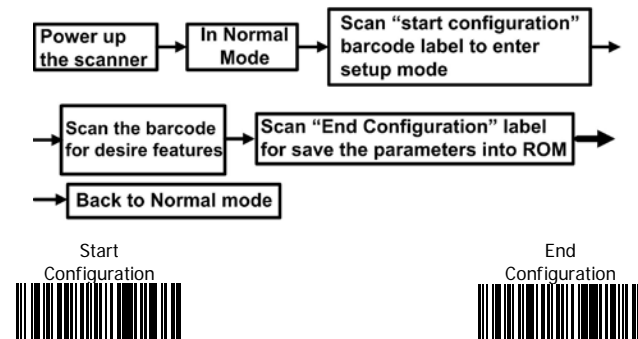
If you are unsure of the scanner configuration or have scanned the incorrect codes, please scan from A1 to A7 for USB HID or B1 to B7 for RS232 or USB Serial. This will reset the scanner to its factory defaults.

USB HID		RS232 or USB Serial	
A1		B1	
A2		B2	
A3		B3	
A4		B4	
A5		B5	
A6		B6	
A7		B7	

\* **Note:** Please install PL-2303 driver for USB Serial.

### Barcode Configuration Method:

(Flow chart for setup procedure :)



### Keyboard Country (For USB HID Only)

Scan the appropriate country code as below to program the keyboard layout for your country or language. As a general rule, the following characters are supported, but need special care for countries other than the United States: @ | \$ # { } [ ] = / ' \ < > ~

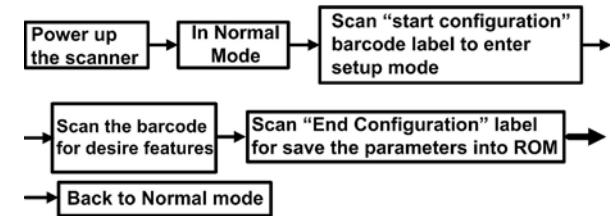
USA (Original setting)	Japan
Denmark	Finland
France	Germany
Italy	Norway

### 1D Symbolgies – 1

ENABLE	CODE 39	DISABLE
ENABLE	CODE 39 Transmit Start/Stop Character	DISABLE
ENABLE	CODE 39 FULL ASCII	DISABLE
ENABLE	CODE 128	DISABLE
ENABLE	GS1-128 UCC/EAN-128	DISABLE

### Barcode Configuration Method:

(Flow chart for setup procedure :)



### 1D Symbologies – 2

ENABLE	<u>MSI</u>	DISABLE
ENABLE	<u>UPC-E</u>	DISABLE
ENABLE	<u>UPC-A</u>	DISABLE

### 1D Symbologies – 3

ENABLE	<u>EAN-8</u>	DISABLE
ENABLE	<u>EAN-13</u>	DISABLE
ENABLE	<u>Interleaved 25</u>	DISABLE
ENABLE	<u>Matrix 25</u>	DISABLE
ENABLE	<u>Industrial 25</u>	DISABLE
ENABLE	<u>CODE 93</u>	DISABLE
ENABLE	<u>ISSN</u>	DISABLE
ENABLE	<u>ISBN</u>	DISABLE

### 1D Symbologies – 4

ENABLE	<u>CODABAR</u>	DISABLE
ENABLE	<u>GS1-Databar (RSS)</u>	DISABLE
ENABLE	<u>GS1-Databar (RSS-Limited)</u>	DISABLE
ENABLE	<u>GS1-Databar (RSS-Expand)</u>	DISABLE
ENABLE	<u>CODE 11</u>	DISABLE

### Inter-Keystroke Delay (For USB HID Only)

This parameter specifies the delay between emulated keystrokes

No Delay	Short Delay (5ms)
Medium Delay (10ms)	Long Delay (15ms)

- Information in this document is subject to change without notice.
- For more information, please visit: [www.riotec.com.tw](http://www.riotec.com.tw)