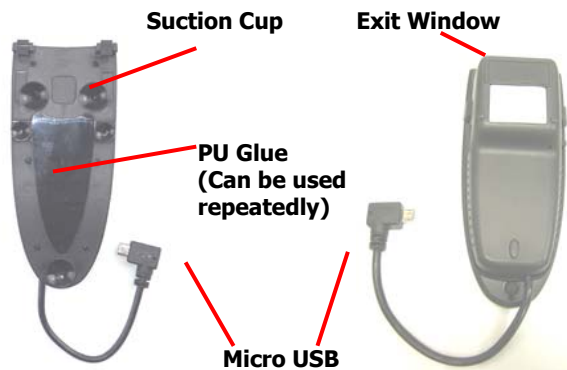


## Quick Guide - DC9270

1



Connect to micro USB port of OTG device

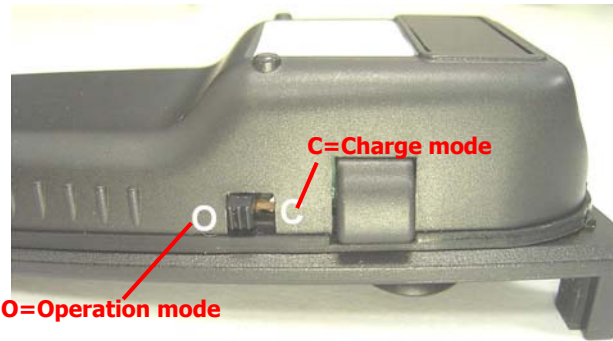
2



Indicator (LED)

Li- Ion Battery

3



O=Operation mode

- \* Before you use scanner, please switch to "C" for battery charge for 3~4 hours.
- \* Under "C mode", you can raise/lower soft-keyboard easily. (For USB HID only)

4



Charge port

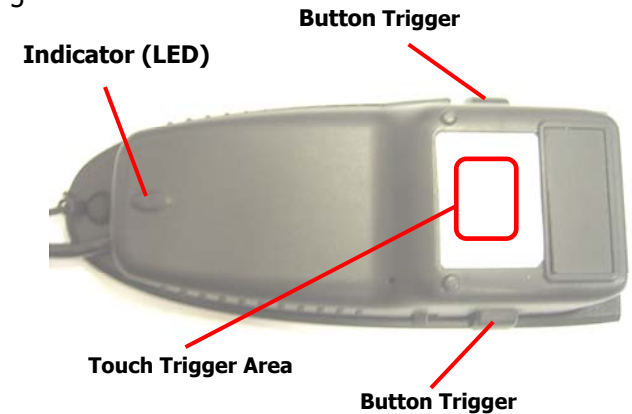
DC9270 is with Li-Ion battery inside. When in charging, please use the original power adaptor of OTG device (recommend). Through it, it charges both OTG device and DC9270 internal battery at the same time. When in low battery (Red LED flashing), please charge it immediately.

### LED Indicator Information

Green LED OFF	Full charged (Charge mode)
Green LED ON	Charging (Charge mode)
Red LED Flashing	Low battery (Operation mode)

Attention: Under "Operation mode" please do not charging, otherwise the OTG device's battery will be charging back to DC9270's battery.

5



The touch sensor area is around the central area. There are 2 button triggers on the right and left side. Please check the above drawing for your reference.



### Installation

Before using scanner, please make sure that the OTG device is fully charged.

- Under USB HID interface
  - \*\* When plugged into OTG device, it will be recognized and begin to scan the barcode.
- Under USB Serial interface
  - \*\* Please install PL-2303 driver into your OTG device first. PL-2303 driver can be downloaded from Google Play
  - \*\* Connect scanner to your OTG device, then, you can know which serial port scanner connects to.
  - \*\* The data you scan will be sent to serial port and your APP can get the data from serial port directly.

## Reset Configuration to Defaults

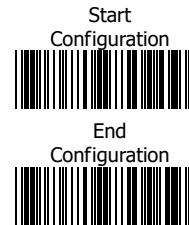
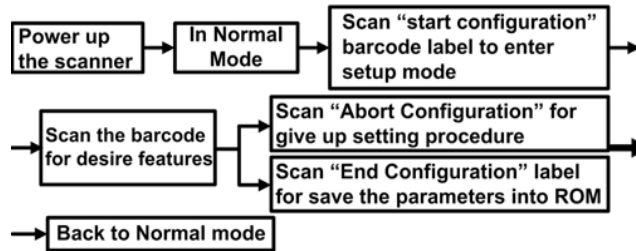
If you are unsure of the scanner configuration or have scanned the incorrect codes, please scan the "Default" barcode. This will reset the scanner to its factory defaults. (scan from A1 for USB HID, B1 to B4 for USB Serial)



**Note:** Please install PL-2303 driver for USB Serial.

## Barcode Configuration Method:

(Flow chart for setup procedure :)



## Multi-Interface Functions



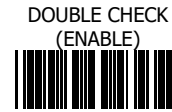
SOUND LEVEL



SOUND / LED CONTROL



## Multi-Interface Functions



DOUBLE CHECK



READING MODE

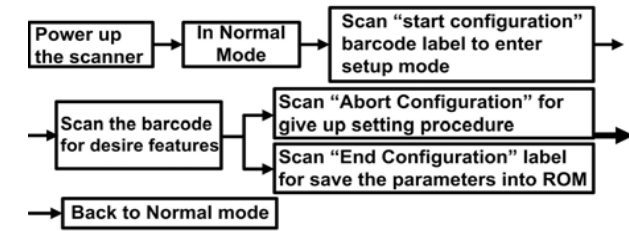


## Keyboard Language

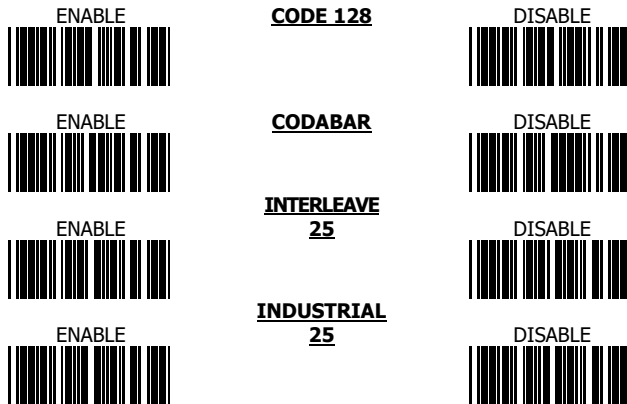


## Barcode Configuration Method:

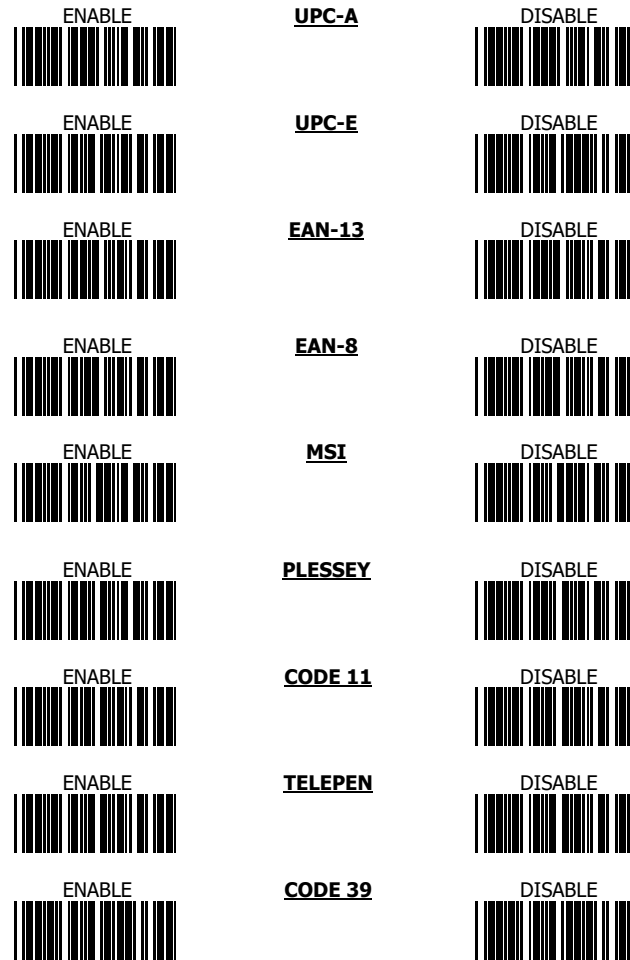
(Flow chart for setup procedure :)



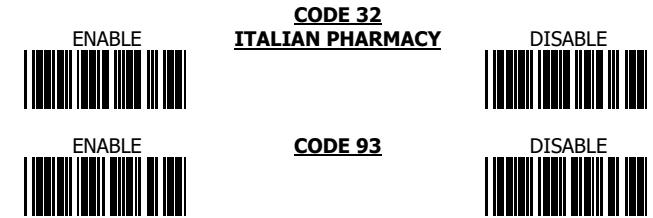
### 1D Symbolgies On/OFF - 1



### 1D Symbolgies On/OFF – 2



### 1D Symbolgies On/OFF – 3



- Information in this document is subject to change without notice.
- For more information, please visit: [www.riotec.com.tw](http://www.riotec.com.tw)