

# Programming Quick Guide

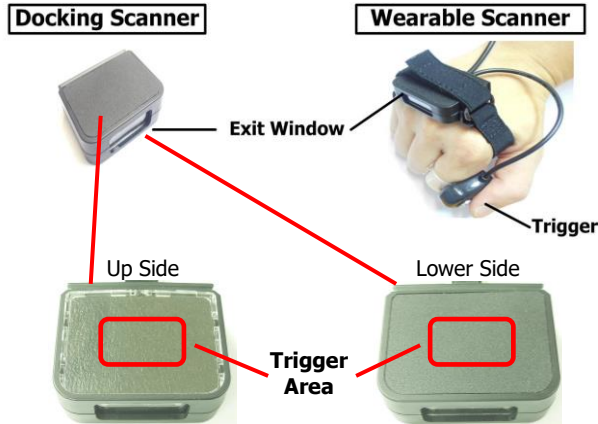
- DC9250: Docking Scanner
- DC9260: Wearable Scanner

## Docking Scanner :

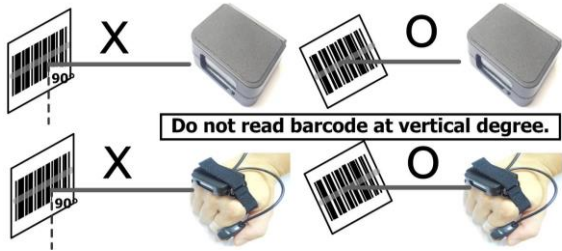
Gently touch the trigger area at the middle of scanner, to enable the laser(for reading barcode)

## Wearable Scanner :

Press the ring trigger to enable the laser.



The touch sensor area is around middle of the scanner as drawing shown.



## Installation

They are Plug & Play USB (HID) devices. When plugged into your Android OTG devices, it can be recognized as barcode scanner and begin to scan the barcode. Before using scanner, make sure the smartphone or tablet is fully charged. Open your APP, they can work as a keyboard input.

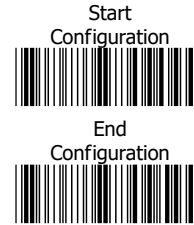
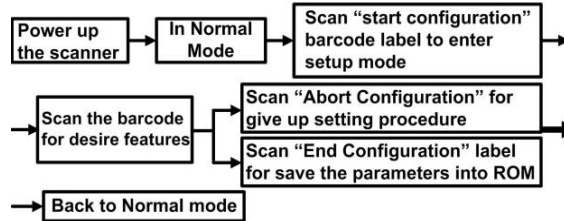
## Reset Configuration to Defaults

If you are unsure of the scanner configuration or have scanned the incorrect codes, please scan the "Default" barcode. This will reset the scanner to its factory defaults.



## Barcode Configuration Method:

(Flow chart for setup procedure :)



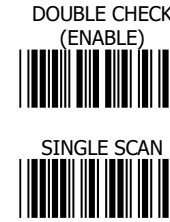
## Multi-Interface Functions



**SOUND LEVEL**  
**SOUND / LED CONTROL**



## Multi-Interface Functions



**DOUBLE CHECK**  
**READING MODE**

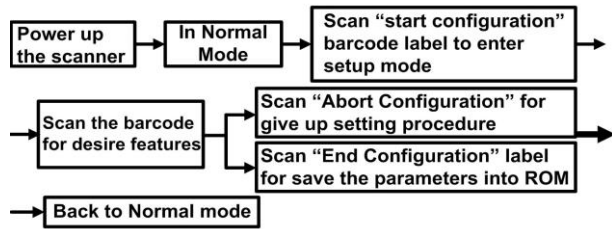


## Keyboard Language

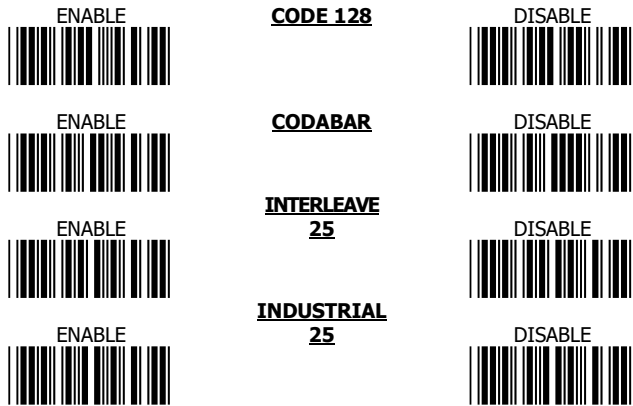


### Barcode Configuration Method:

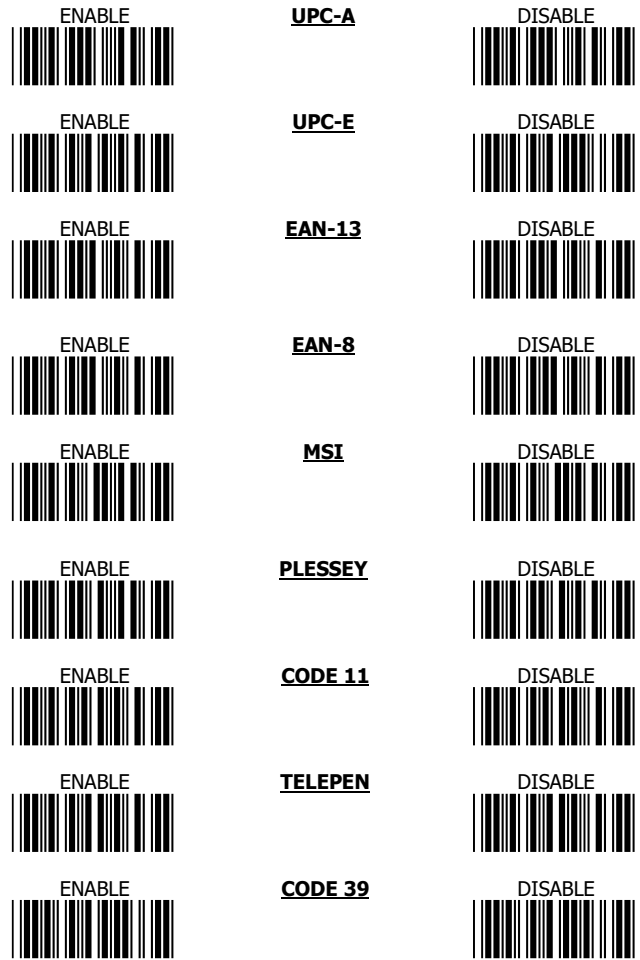
(Flow chart for setup procedure :)



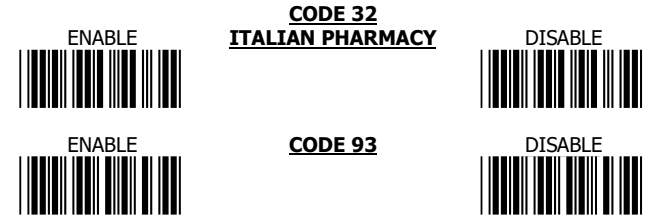
### 1D Symbolgies On/OFF - 1



### 1D Symbolgies On/OFF – 2



### 1D Symbolgies On/OFF – 3



\* Android OTG smartphones/tablets include:  
Galaxy S2/S3/Nexus/Galaxy Tab, Google/Asus: Nexus 7,  
Acer Iconia Tab A200/A500, Archos G9, Notion Ink Adam,  
Motorola Xoom, Droid RAZR MAXX, XT910, XT912, Droid 4 / 4G,  
MB865 Atrix 2 Toshiba Excite 10, Sony Xperia phone series/Tablet S  
Or, other smartphones/tablets with OTG function can support  
docking barcode scanner

- Information in this document is subject to change without notice.
- For more information, please visit:  
[www.riotec.com.tw](http://www.riotec.com.tw)