



Bluetooth 1D laser Pocket barcode scanner

Quick Guide



Model no.: iDC9608A

Introduction

Designed primarily for P.O.S. retail environments, the iDC9608A is a Bluetooth pocket barcode scanner that allows you to scan various barcoded items. Its in-built 650nm laser engine allows you to reliably read barcodes on various shapes and is a great space-saver for busy or limited workspaces. It supports iOS, Android, and Windows devices through Bluetooth communication.

Delivery content

- * Pocket Barcode scanner x 1
- * Quick instructions x 1
- * Mini USB cable x 1(for charging only)
- * Strap x 1

Limited Warranty

Riotech provides one-year limited warranty. Riotech will not warranty any product which has been subjected to improper usage, neglect or unauthorized repair or installation. Besides, warranty does not cover the faulty usages or consumable parts. (Cable & battery are consumable.)

Safety instructions

Read the operating instructions carefully and especially observe the safety information. If you do not follow the safety instructions and information on proper handling in this manual, we assume no liability for any resulting personal injury or damage to property.

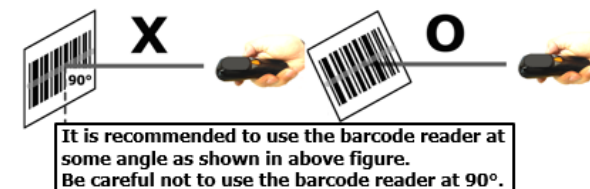
- * The product is equipped with a Class 1 laser.
- * Never look into the laser beam and never point it at people or animals. Laser radiation can seriously damage your eyes.
- * Do not point the laser beam at mirrors or other reflective surfaces. The uncontrolled, reflected beam may strike people or animals.
- * Don't put scanner in places excessively high temperatures, such as expose under direct sunlight
- * Don't use scanner in extremely humid area or drastic temperature change
- * The rechargeable battery is permanently built into the product and cannot be replaced.
- * Never damage the rechargeable battery. Damaging the casing of the rechargeable battery might cause an explosion or a fire!

Operating elements

**** Please switch ON and charge scanner for 3~4 hours at first time before use.**



**** In the beginning, you must press the orange trigger button for 8 seconds to turn on the pocket barcode scanner. Then, press it for scanning barcodes & waking up from sleeping mode.**



How to Connect to Smartphone or Tablet

1. Make sure your device supports BT HID or BT SPP profile
2. Turn off Power-Saving mode on your smartphone/tablet first
3. Then, choose HID or SPP device before connecting to smartphone/tablet. If you don't know what profile your device is, please try HID profile first, then, SPP profile.

1. Main MENU

```

MAIN> S 12:52
Direct-scan
Memory-scan
Upload
↑ ENTER ↓
    
```

3. select BT setup

```

S> S 12:52
BT setup
Sleep time
Output Speed
ESC ENTER ↓
    
```

2. select Setup

```

MAIN> S 12:52
Memory-scan
Upload
Setup
↑ ENTER ↓
    
```

After you select what you want, press the orange button to enter the next or ESC button back to the previous.

How to connect to SPP or HID device

SPP device (from A1 to A2); HID device (from B1 to B3)

A1. select SPP device

```

S/B> S 12:52
SPP device
HID device
dongle
ESC ENTER ↓
    
```

A2. Setting.. Completed.

```

Setting ...
Completed!!!
    
```

B1. select HID device

```

S/B> H 12:52
SPP device
HID device
dongle
ESC ENTER ↓
    
```

B2. select Simple pairing or Pairing

```

S/B/H> H 12:52
Simple pairing
Pairing
ESC ENTER ↓
    
```

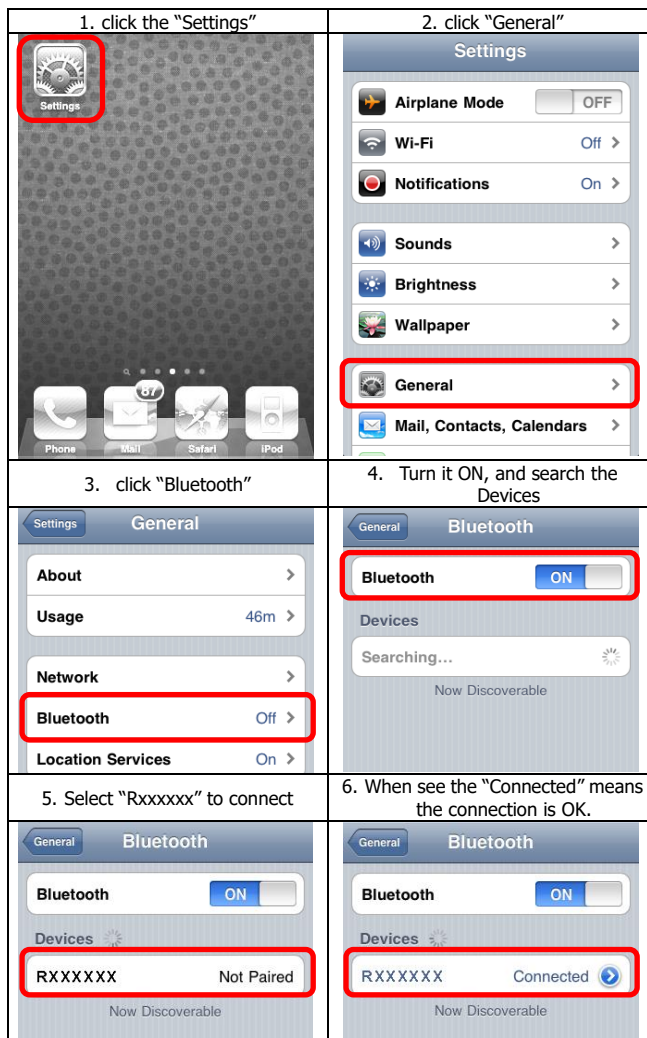
B3. Setting ... Completed.

```

Setting ...
Completed!!!
    
```

After you select what you want, the next or ESC button back to the previous.

press the orange button to enter



(example: pairing with iPhone)

4. Please complete the connection procedures as the above photos.
5. After the connection is completed, the RED light will be **OFF**.
6. Before using WordPad file or appropriate APP, please set keyboard language of device to **US language**. Then, scan the barcodes and the barcode data will show on the cursor side.

Notes:

- * This product complies with Bluetooth standards. This device that communicated with this product must support the same SPP or HID. For other Bluetooth devices with other profiles we cannot guarantee a connection before the product has been tested.
- * The communication speed and range of the product may vary due to obstacles and radio wave condition between the product and device to which it is connected. Condition on the host device may also affect the communication speed and range of the scanner.

LED Indicator Information

Orange LED ON	Full charged
Orange LED Flashing	Charging / Low battery
Red LED Continual ON	Off line / out of service
Red LED ON	Not read
Green LED ON	Good read
Orange LED ON	Good read (Batch mode)

Remark:

- * When the battery power is too low, the Orange LED will flash and beep once. Scanner should be charged immediately.
- * In case the power consumed out totally; the RTC (Real Time Clock) will back to original setting 01012000.
- * If scanner shuts down it is recommended to charge it fully before turning it back on.
- * Under power-saving mode, there will not be LED indication when charging.

Reset Configuration to Defaults

(scan from A1 to A6 for HID profile or B1 to B4 for SPP profile)

HID profile



SPP profile



There are two operating modes on the scanner

1. Direct-scan Mode

1. select **Direct-scan**

```

MAIN> H 12:52
Direct-scan
Memory-scan
Upload
↑ ENTER ↓
    
```

- 2b. BT is disconnected.

```

D> H 12:52
Off line !!!
...Linking!
ESC SCAN MAIN
    
```

- 2a. BT connected, begin to scan the barcodes

```

D> H 12:52
ESC SCAN MAIN
    
```

If BT is disconnected, please back to page #2 and do the pairing procedure again.

2. Memory-scan Mode

1. select **Memory-scan**

```

MAIN> H 12:52
Direct-scan
Memory-scan
Upload
↑ ENTER ↓
    
```

2. begin to scan the barcodes

```

M> H 12:52
ESC SCAN MAIN
    
```

Under Memory-scan mode, enable/disable "Quantity entry" function

Disable "Quantity entry" (default)

1. disable "Quantity entry" Setting code



3. press **DEL** to delete the last barcode data

```

M> H 12:52
1234567
ESC SCAN DEL
    
```

2. begin to scan the barcodes

```

M> H 12:52
ESC SCAN MAIN
    
```

4. be sure that you want to delete the last barcode.

```

M> H 12:52
The last code
Will be deleted!
Are you sure?
NO YES
    
```

Enable "Quantity Entry" function, decide the order of the output data to your device first

1. Q'ty first, then, barcode



3. Enable "Quantity Entry" Setting code



2. Barcode first, then, Q'ty



4. begin the scan the barcodes

```

M> H 12:52
SCAN:
Q'ty: 000
ESC SCAN ENTER
    
```

When "Quantity Entry" is enabled, decide how to type-in the number.

- By button (default) C1. enable



- C2. scan the barcode

```

M> H 12:52
SCAN:
Q'ty: 1
ESC SCAN ENTER
    
```

- By scanning the number code D1. enable



- D2. scan the barcodes

```

M> H 12:52
SCAN:
Q'ty: 1
ESC SCAN ENTER
    
```

- C3. Press the ENTER to type the q'ty

```

M> H 12:52
1234567
Q'ty: 1
ESC SCAN ENTER
    
```

- C4. press ↓ to choose number, then, press ENTER to confirm

```

M> H 12:52
Q'ty: 5---
ESC ENTER ↓
    
```

5. Then, scan the next barcode

```

M> H 12:52
SCAN:
Q'ty: 1
ESC SCAN ENTER
    
```

- D3. Press the ENTER to type the q'ty

```

M> H 12:52
7654321
Q'ty: 1
ESC SCAN ENTER
    
```

- D4. scan numeric code (page #5)

```

M> H 12:52
Q'ty: 5---
ESC ENTER
    
```

5. end by X code, then, be ready to scan the next

```

M> H 12:52
SCAN:
Q'ty: 1
ESC SCAN ENTER
    
```

Upload data (Memory-scan)

1. press **ESC**, select **Upload**

```

MAIN> H 12:52
Direct-scan
Memory-scan
Upload
↑ ENTER ↓
    
```

3. After data upload, press **ERASE** to delete memory data

```

U> H 12:52
ESC SPEED ERASE
    
```

5. After you delete the memory data, it will be back to **MAIN MENU**

2. BT connected, press **START** to send data

```

U> H 12:52
Push START key
to send data...
ESC START MAIN
    
```

4. be sure that you want to delete memory data.

```

U/E> H 12:52
Data in memory
Will be erased!
Are you sure?
NO YES
    
```

Switch from Memory-scan to Direct-scan mode

1. switch **Memory-scan** to **Direct-scan** mode

```

D> H 12:52
Data in memory
will be erased!
NO YES
    
```

3. begin to scan the barcode

```

D> H 12:52
ESC SCAN MAIN
    
```

2. must **delete** all data in the memory

```

Erasing...
Completed!!!
    
```

Power-saving Mode

1. Main MENU

```

MAIN> H 12:52
Direct-scan
Memory-scan
Upload
↑ ENTER ↓
    
```

3. select **Sleep time**

```

S> H 12:52
BT setup
Sleep time
Output Speed
ESC ENTER ↓
    
```

2. select **Setup**

```

MAIN> H 12:52
Memory-scan
Upload
Setup
↑ ENTER ↓
    
```

4. press ↓, decide the time to enter sleeping mode

```

S/P/S> H 12:52
Sleep time
00
ESC ENTER ↓
    
```

* When charging, the scanner will not enter power-saving mode automatically.

Transmission Speed

Transmission speed is dependent on your device. In order not to lose data, please choose the correct speed.

1. Main MENU

```
MAIN> █ H 12:52
Direct-scan
Memory-scan
Upload
↑ ENTER ↓
```

3. select Output Speed

```
S> █ H 12:52
BT setup
Sleep time
Output Speed
ESC ENTER ↓
```

RTC (Real-time clock)

1. Main MENU

```
MAIN> █ H 12:52
Direct-scan
Memory-scan
Upload
↑ ENTER ↓
```

3. select Time

```
S> █ H 12:52
Sleep time
Output Speed
Time
ESC ENTER ↓
```

5. select Data Stamp

```
S/T/S> █ H 12:52
Data Stamp
Time Stamp
Interval char.
ESC ENTER ↓
```

7. press ESC, select Time Stamp

```
S/T/S> █ H 12:52
Data Stamp
Time Stamp
Interval char.
ESC ENTER ↓
```

9. press ESC, select Interval char.

```
S/T/S> █ H 12:52
Data Stamp
Time Stamp
Interval char.
ESC ENTER ↓
```

2. select Setup

```
MAIN> █ H 12:52
Memory-scan
Upload
Setup
↑ ENTER ↓
```

4. select the speed type,

```
S/O> █ H 12:52
Medium
Low
Extra low 1
ESC ENTER ↓
```

2. select Setup

```
MAIN> █ H 12:52
Memory-scan
Upload
Setup
↑ ENTER ↓
```

4. select Stamp

```
S/T> █ H 12:52
Stamp
Format
Data
ESC ENTER ↓
```

6. Data Stamp is on or off.

```
S/T/S/D> █ H 12:52
Data Stamp
On
Off
ESC ENTER ↓
```

8. Time Stamp is on or off

```
S/T/S/T> █ H 12:52
Time Stamp
On
Off
ESC ENTER ↓
```

8. select Interval char.

```
S/T/S/T> █ H 12:52
Interval char.
'
ESC ENTER ↓
```

The format of Date setting

1. Main MENU

```
MAIN> █ H 12:52
Direct-scan
Memory-scan
Upload
↑ ENTER ↓
```

3. select Time

```
S> █ H 12:52
Sleep time
Output Speed
Time
ESC ENTER ↓
```

5. select the format of date

```
S/T/F> █ H 12:52
MM/DD/YY
DD/MM/YY
YY/MM/DD
ESC ENTER ↓
```

Date setting

1. Main MENU

```
MAIN> █ H 12:52
Direct-scan
Memory-scan
Upload
↑ ENTER ↓
```

3. select Time

```
S> █ H 12:52
Sleep time
Output Speed
Time
ESC ENTER ↓
```

5.set the date, press ↓ to select number, then, press **ENTER** to go to the next

```
S/T/D> █ H 12:52
MONTH(01-12):01
Date (01-31):01
Year (00-99):00
ESC ENTER ↓
```

2. select Setup

```
MAIN> █ H 12:52
Memory-scan
Upload
Setup
↑ ENTER ↓
```

4. select Format

```
S/T> █ H 12:52
Stamp
Format
Data
ESC ENTER ↓
```

2. select Setup

```
MAIN> █ H 12:52
Memory-scan
Upload
Setup
↑ ENTER ↓
```

4. select Data

```
S/T> █ H 12:52
Stamp
Format
Data
ESC ENTER ↓
```

6. Save the date data

```
Save it ?
NO YES
```

Time setting

1. Main MENU

```
MAIN> █ H 12:52
Direct-scan
Memory-scan
Upload
↑ ENTER ↓
```

3. select Time

```
S> █ H 12:52
Sleep time
Output Speed
Time
ESC ENTER ↓
```

5. set the time. Press ↓ to select the number, then, press the **ENTER** to go the next

```
S/T/T> █ H 12:52
Hour (00-23):00
Min (00-59):00
Sec (00-59):00
ESC ENTER ↓
```

2. select Setup

```
MAIN> █ H 12:52
Memory-scan
Upload
Setup
↑ ENTER ↓
```

4. select Clock

```
S/T> █ H 12:52
Format
Data
Clock
ESC ENTER ↓
```

6. save the time setting

```
Save it ?
NO YES
```

Trigger Mode



Trigger always
(Trigger available at any time)



Trigger standard (**Default**)
(Trigger available, after data sent to the device)

How to append a "prefix" or a "suffix" to the barcode data



prefix



suffix

1. Scan above configuration code for Prefix or Suffix
2. Enter the required values (right, numeric barcode) for Prefix or Suffix using the hex values for the desired HEX values from Prefix & Suffix TABLE (below page)"
3. Then, end by scanning Code X (below, right)

- * The max. of special characters is 5.
- * When you append 1~4 required values for Prefix or Suffix, it must end with Code X.
- * It doesn't need Code X, if you append 5 values to barcode data.

How to delete Prefix or Suffix

1. Scan above configuration code for Prefix or Suffix
2. Enter the "0" "0" (above, right)
3. Then end by scanning Code X (below, right)

Numeric barcode for settings



0



6



C



1



7



D



2



8



E



3



9



F



4



A



X



5



B



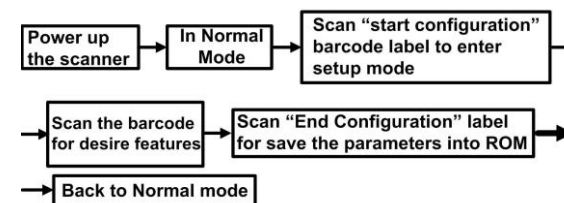
X

Prefix & Suffix TABLE

HEX	HID (SPP)	HEX	HID (SPP)	HEX		HEX		HEX		HEX	
01	CTRL A (SOH)	19	CTRL Y (EM)	20	SPACE	38	8	50	P	68	h
02	CTRL B (STX)	1A	CTRL Z (SUB)	21	!	39	9	51	Q	69	i
03	CTRL C (ETX)	1B	ESC (ESC)	22	"	3A	:	52	R	6A	j
04	CTRL D (EOT)	1C	CTRL \ (FS)	23	#	3B	;	53	S	6B	k
05	CTRL E (ENQ)	1D	CTRL] (GS)	24	\$	3C	<	54	T	6C	l
06	CTRL F (ACK)	1E	CTRL ^ (RS)	25	%	3D	=	55	U	6D	m
07	CTRL G (BEL)	1F	CTRL _ (US)	26	&	3E	>	56	V	6E	n
08	Backspace (BS)			27	'	3F	?	57	W	6F	o
09	Tab (HT)			28	(40	@	58	X	70	p
0A	CTRL J (LF)			29)	41	A	59	Y	71	q
0B	CTRL K (VT)			2A	*	42	B	5A	Z	72	r
0C	CTRL L (FF)			2B	+	43	C	5B	[73	s
0D	Enter (CR)			2C	,	44	D	5C	\	74	t
0E	CTRL N (SO)			2D	-	45	E	5D]	75	u
0F	CTRL O (SI)			2E	.	46	F	5E	^	76	v
10	CTRL P (DLE)			2F	/	47	G	5F	_	77	w
11	CTRL Q (DC1)			30	0	48	H	60	`	78	x
12	CTRL R (DC2)			31	1	49	I	61	a	79	y
13	CTRL S (DC3)			32	2	4A	J	62	b	7A	z
14	CTRL T (DC4)			33	3	4B	K	63	c	7B	{
15	CTRL U (NAK)			34	4	4C	L	64	d	7C	
16	CTRL V (SYN)			35	5	4D	M	65	e	7D	}
17	CTRL W (ETB)			36	6	4E	N	66	f	7E	~
18	CTRL X (CAN)			37	7	4F	O	67	g		

Barcode Configuration Method:

(Flow chart for setup procedure :)



Start Configuration



End Configuration



Symbologies -1

ENABLE



EAN-13

DISABLE



ENABLE



EAN-8

DISABLE



ENABLE



CODE 39

DISABLE



ENABLE



CODE 93

DISABLE



ENABLE



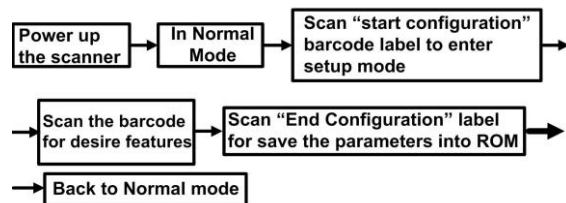
TELEPEN

DISABLE

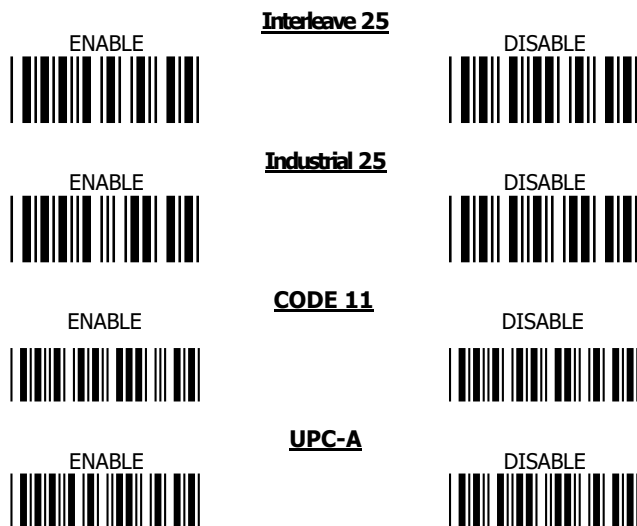


Barcode Configuration Method:

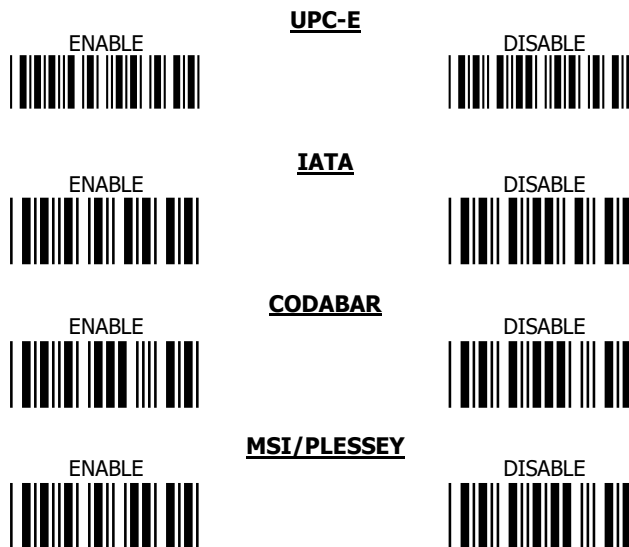
(Flow chart for setup procedure :)



Symbologies -2



Symbologies -3



Quick guide is subject to change without notice.

R_180808_01